



Training Manual & Product Guide





The wax that ...

...loves your skin



Content

Welcome to Harley Wax	1-2
Pre and Post Products	3-4
Hot Wax Range	5-6
Film Wax Range	7-8
Strip Wax Range	9-10
Retail Products & Accessories	11-12
Science of Hair	13
Hair Growth Cycle	14-15
Contra-indications to Waxing	15
Hygiene & Cleanliness	16
Client Consultation Cards	16-18
Pricing & Treatment Usage	19
Application Methods and Tips	19-20



Welcome to Harley Wax

Harley Wax is an advanced hair removal waxing system available to beauty therapists, spas and salons. What makes Harley Wax superior to other waxes is that it causes less irritation, maximises comfort and delivers better results.

With Harley Wax, you can expect a nourishing skin treatment that will remove hairs as short as 1mm. Unlike other depilatory routines, Harley Wax has almost no sticky residue and leaves skin soft with no irritation. Additionally, it removes hair from the root to reduce chances of ingrown hairs and leaves skin hair free for much longer.

Harley Wax is manufactured in the UK. The driving force behind this company was to create a high quality professional waxing system that could also be sold at an affordable price while providing excellent customer service and results.

Harley Wax is used worldwide by some of the of top salons and spas.

An introduction to Harley Wax

Harley Wax is a UK based company, we have achieved rapid success gaining the business of many award winning, top spas and salons. This success can be attributed to the many years of experience in the health and beauty industry, the development and formulation of our products along with our devotion to delivering excellent customer service.

At the core of our Harley Wax range are the Harley Hot and Strip Waxes. What makes the Harley range unique is that all the waxes are made with the finest natural ingredients available. Key components of the waxes are high quality natural raw materials such as pine tree resin, beeswax and essential oils. This can account for the gentle nature of our wax, making it ideal for sensitive skins. All of our wax range has been formulated to have a low melting temperature, which helps to reduce any discomfort associated with waxing. Harley Wax offers an exceptionally effective hair removal treatment along with a nurturing, skin conditioning treatment.

Why more therapists are insisting on Harley Wax?

There are many key reasons why we see more and more therapists insisting on Harley Wax. Firstly, the superior quality of the wax is undeniable. It is easy to use, providing a comfortable treatment. Secondly, Harley Wax treatment costs are very affordable. Thirdly, our devotion to customer service makes ordering a breeze, with all deliveries via a courier service ensuring therapists never run out of stock.

Many therapists state that since using Harley Wax their customer base has increased and in some cases, doubled.

Pre and Post Products

- Harley Cleanser & Toner and Pre-Waxing Oil purify and prepares the skin for the treatment
- Enhances the performance of the wax
- After Wax Oil conditions and nurtures the skin
- Removes any residue
- Calms and soothes the skin, reducing irritation
- Use our Cleanser & Toner, Pre-Waxing Oil and After Wax Oil for optimal results
- Suitable for all skin types
- All our products are animal cruelty free





Cleanser & Toner

500ml

- An essential skin cleansing step for all Harley Waxing treatments
- Acting in two stages, the cleanser firstly emulsifies and removes dirt and oil embedded in the skin
- Secondly, it rebalances the skins PH level, tightens the skin, pores and removes any oil or lotion to achieve the best waxing results.



Pre-Waxing Oil

500ml

- Only to be used with Harley Hot Wax or Harley Film Wax treatments
- Enables the wax to shrink wrap to the hair and not the skin
- Aloe vera has anti bacterial and anti viral properties
- Additionally it contains zinc, which aids in wound healing and creating healthy, smooth, glowing skin. It reduces any redness, rashes or raised skin commonly associated with waxing.
- Finally, the lignins found in Aloe Vera can soak into the skin up to seven layers deep and allows the body to fully absorb all the positive attributes from the treatment.



After Wax Oil

500ml

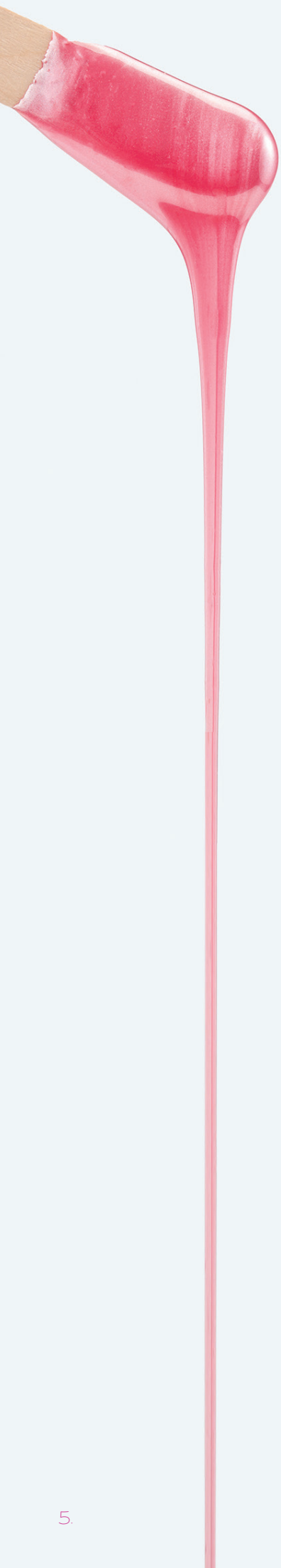
- An essential step for all treatments to finish the conditioning treatment of the skin.
- Reduces skin irritation and redness.
- Tea tree oil acts as an anti bacterial agent to cleanse any dirt and remove dead cells, leaving skin clean and fresh.
- With added lavender extract, the After Wax Oil will soften and condition your skin, resulting in a silky smooth finish, reducing redness and the possibility of ingrown hairs
- Massage a small amount into the freshly waxed area to finish the treatment.



Aloe Soothing Gel

500ml

- Helps soothe the skin once the wax treatment is complete
- The Harley After Wax Soothing Gel is used after either a Harley Hot, Strip or Film Wax to finish the conditioning treatment of the skin.
- Leaves a smooth oil free finish.
- The calming properties of aloe vera reduce skin irritation and the possibility of ingrown hairs.



Hot Wax Range

- Removes hairs as short as 1mm
- Does not leave a sticky residue
- Can be reapplied to the same area 2-3 times
- Made from high quality pine tree resin, beeswax and essential oils
- All our products are animal cruelty free
- Use our Pre Wax and After Care Oils for optimal results

Where can it be used?

This product can be used for both male and female clients on the following areas:

Face - Brow, lip, chin, nose and ears

Body - Underarm, bikini, Hollywood and Brazilian

Titanium Dioxide Wax (Creamy Formulation)

Titanium Dioxide is a naturally occurring oxide mineral of titanium. When added to wax, it creates a creamy, velvety texture that assists in the spreadability of the wax. Titanium Dioxide considerably reduces adhesion of the wax onto the skin, guaranteeing a strong grip on the hair, which allows for a more comfortable treatment. It reduces irritation and redness, making it an ideal wax for clients with extra sensitive skin.

Titanium Dioxide waxes are ideal for the extra sensitive areas such as the face and bikini region and allow removal of hair as short as 1mm. To ensure an extra gentle treatment, it is essential that Harley Pre-Waxing Oil is applied prior to the application of Harley Hot or Film Wax. The Pre-Waxing Oil is specifically formulated to provide a lipid barrier, allowing the wax to adhere to only the hairs and not the skin. This allows for a comfortable waxing experience and silky smooth results. Harley Wax's Titanium Dioxide Waxes include the Chocolate and Rose Hot Wax.

Micromica Wax (Gel Formulation)

Micromica is a silicate mineral used in depilatory wax to create a smooth consistency and assist in the flexibility and workability of the wax. This minimises the risk of the product cracking during the setting period. This mineral has reflective and refractive properties which gives the wax its pearlised and glittery appearance.

Using only the finest ingredients and essential oils, Harley Wax has formulated two low melting temperature Mica Hot Waxes which facilitates client comfort and satisfaction. The range of Harley Mica Waxes include our Aloe and Summer Fruits Hot Wax.



Harley Lavender Hot Wax

1kg

Formulation: Lavandula angustifolia

Strength: 4/5

Fragrance: Soothing extracts of Lavender



Harley Chocolate Hot Wax

1kg

Formulation: Titanium Dioxide

Strength: 4/5

Fragrance: A rich aroma of Chocolate



Harley Aloe Hot Wax

1kg

Formulation: Micromica

Strength: 5/5

Fragrance: Refreshing and cool with an aquatic accent



Harley Summer Fruits Hot Wax

1kg

Formulation: Micromica

Strength: 5/5

Fragrance: Redolent of red berries



Harley Rose Hot Wax

1kg

Formulation: Titanium Dioxide

Strength: 4/5

Fragrance: Sensuous country garden

Film Wax Range

- A technologically advanced wax between Hot & Strip Wax
- Removes hairs as short as 1mm
- Eliminates the need to tweeze
- Very economical as ultra thin layers can be applied
- Ideal for facial waxing
- Great for Brazilians
- Has an extremely low melting temperature
- A must have for all professional salons or spas
- Animal cruelty free

Where can it be used?

This product can be used for both male & female clients on:

Face - Brow, lip, chin, nose and ears

Body - Arms, legs, back and chest, underarm, bikini, Hollywood and Brazilian

Harley Film Wax is designed for all areas. It is fantastic for all intimate waxing along with facial waxing and larger areas such as the arms and back. Its versatility makes it a must have for all professional salons and spas.

The genius of our unique Film Wax is how it combines the best features of Harley Hot and Strip Waxes. It is comfortable and easy to apply, as well as lightweight and spreadable.

Film Wax is so popular with therapists because of the fantastic, reliable results, whilst clients love the optimal comfort it provides.

Anyone who uses Harley Wax will know that we are passionate about providing a premium experience. The innovative Film Wax moves the science of waxing to the next level, whilst continuing to use all natural, high quality ingredients manufactured in the UK.

The Harley Film Wax collection is a very flexible, resilient wax range. The Azulene and Lavender fragrances are available in both smooth melting pellets and chunks. The latest addition to the range is the Summer Fruits aroma which adds a sensory pleasure to the waxing experience and is available in easy melt pellets.

This is a new generation wax that provides all the comforts and easy application of a traditional hot wax, coupled with the thin "spreadability" of a strip wax. This technologically advanced wax is fantastic for all intimate waxing, from facial waxing to Brazilians.

The Harley Wax Film Wax range is the ultimate hybrid wax.



Harley Azulene Film Wax

1kg chunks & pellets

Formulation: Titanium Dioxide, Micromica

Strength: 4/5

Skin Type: Sensitive, dry, oily

Technical difficulty: 4/5



Harley Lavender Film Wax

1kg chunks & pellets

Formulation: Lavandula angustifolia

Strength: 4/5

Skin Type: Normal, dry, oily

Technical difficulty: 4/5



Harley Summer Fruits Film Wax

1kg pellets

Formulation: Micromica

Strength: 5/5

Skin Type: Normal, dry, oily

Technical difficulty: 4/5

Film Wax is all about a perfectly smooth result, every time.

Therapists find that they use significantly less Film Wax than Hot Wax. It can be applied ultra finely, as you would with a Strip Wax and does not require strips for removal. This makes it a very economical and straight-forward product that attracts devoted clients. It should be noted that this range's technique is slightly more difficult to grasp at first, however practice makes perfect and soon you will master the technique.



Strip Wax Range

- Removes hairs as short as 1mm
- Does not leave a sticky residue
- Can be reapplied to the same area 2-3 times
- Made from high quality pine tree resin essential oils
- All our products are animal cruelty free
- Use our Cleanser and After Care Oils for optimal results
- Vegan Range

Where can it be used?

This product can be used for both male and female clients on:

Body - Arms, legs, back and chest





Rose Strip Wax

500ml, 800ml, 100ml cartridges

Formulation: Titanium Dioxide

Strength: 4/5

Suitability: Ideal for sensitive skin



Tea Tree Strip Wax

500ml, 800ml

Formulation: Titanium Dioxide

Strength: 4/5

Suitability: Anti-inflammatory properties for delicate skin types



Summer Fruits Strip Wax

500ml, 800ml, 100ml cartridges

Formulation: Micromica

Strength: 5/5

Suitability: Perfect for all skin types



Gold Strip Wax

500ml, 800ml, 100ml cartridges

Formulation: Micromica

Strength: 5/5

Suitability: Great for stubborn or coarse hair and male waxing

Retail Products & Accessories



Ingrown Hair Solution

125ml

Waxing does not have to lead to irritation. We want to change the way clients view waxing and entice new customers who might have skin sensitivity concerns.

We have invested in developing another UK made, natural waxing companion product designed to ease irritation and prevent ingrown hairs. Ingrown hairs spoil the finish of a great wax. Our Ingrown Hair Solution reduces the build up of dead skin cells that can block pores, causing irritation and ingrown hairs. Use straight after waxing to soothe and condition the skin, achieving a calm and smooth result. Packed with plant extracts, Arnica and Allantoin, clients will see a noticeable reduction in bumps, redness and ingrown hairs after using this Harley after wax product. Easy to use and gentle on the skin, Harley Ingrown Hair Solution can be used every day, until any redness has cleared up. With continued use, clients will see a smoother, more polished finish to the skin after waxing. They will love the look and the feel - and salons will love the positive recognition from their customers after another great waxing experience.

Pomegranate Sugar Scrub

500ml

Pomegranate Sugar Scrub is an oil free product designed to prepare the skin for the smoothest waxing results. Anyone booking in for a wax treatment wants reassurance that their skin will feel great and look smooth afterwards, without unnecessary pain or irritation during the process. However, skin preparation is essential to achieving these results.

Using our Pomegranate Sugar Scrub will treat your clients to smooth skin, everywhere. The gentle exfoliating and moisturising formulation will leave the skin soft and receptive to a waxing treatment.

Clients should use the Pomegranate Sugar Scrub from two or three days post wax, to condition the skin and minimise ingrown hairs.



Harley Natural Wax Solvent

500ml

Our citrus based Harley Wax Solvent can be used on most materials, clothing, linen, surface or machinery.

To use, pour some natural wax solvent on to a clean dry cloth until damp. Hold the cloth to the wax for a few seconds and allow the solvent to soak in. Gently rub around the area until area is clean. Use another dry cloth to dry the area.



Science of Hair

The hair is divided into two principal parts:

Hair part	Description
Hair root	The portion of the hair structure beneath the skins surface within the hair follicle. The hair root extends from the hairline to the bulb.
Hair shaft	The portion of the hair structure extending above the skins surface

Structures associated with the hair root:

Hair part	Description
Hair follicle	A tube like depression or pocket in the skin or scalp encasing the hair root.
Hair bulb	A thickened club shaped structure forming the lower part of the hair root
Hair papilla	Small, cone shaped elevation found at the bottom of the hair follicle that fits into the hair bulb. Within the papilla is a rich blood and nerve supply that contributes to the growth and regeneration of the hair.

Structures associated with the hair follicle:

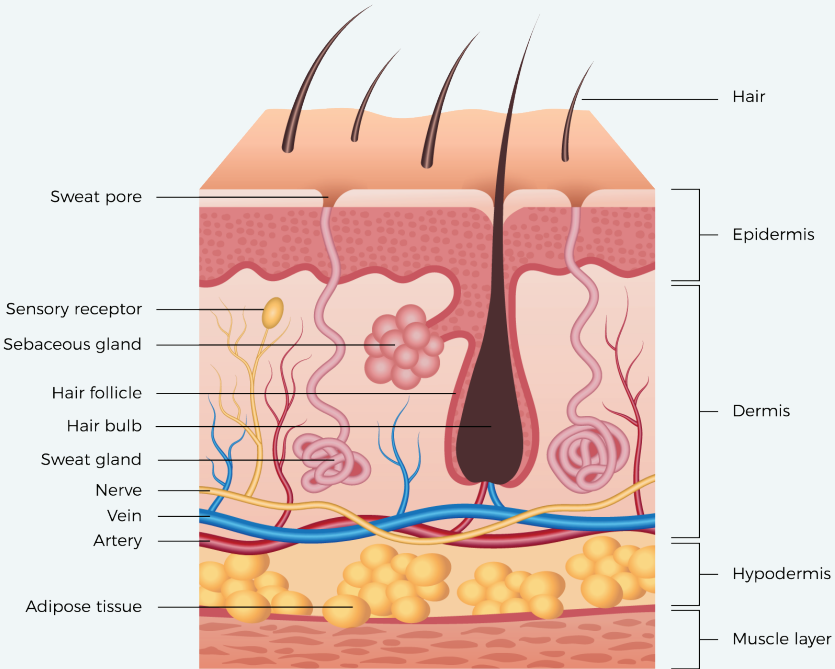
Hair part	Description
Arrector pili Muscle	A small involuntary muscle attached to the underside of the hair follicle. Fear or cold causes the muscle to contract, making the hair stand on end.
Sebaceous or oil gland	These are connected to the hair follicles. The secretion of sebum from these glands gives lustre and pliability to the hair.

The hair has three layers:

Hair part	Description
Cuticle	The outer layer of the hair shaft is thin and colourless. It serves as protection to the cortex.
Cortex	The middle layer of the hair shaft which provides the strength, colour and texture of a hair fibre.
Medulla	This is the central core that contains the living matter.

Structure of the human skin

The hair is mainly composed of Keratin. Keratin is a protein that protects our hair from breakage and is found in our nails and skin.



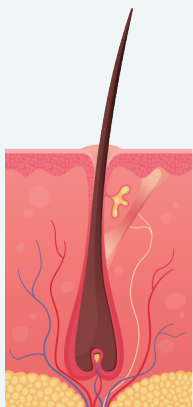
Hair Growth Cycle

The Hair Growth Cycle

As follicles cease to produce hair, they shrivel up and the lower part of the bulb degenerates. These resting follicles are simpler and much shorter structures than the active ones. At the base of the resting follicle, the hair, if still present, forms a club that is anchored by keratinous strands to the epithelial sac. Close inspection on removal of a hair in the resting stage will show the shallow position of the hair. It sits almost on the skin's surface and has a 'full stop' on its root end. This rounded club is a ball of cells and the lower part of the epithelial sac called the hair germ, from which the next generation of hairs develop.

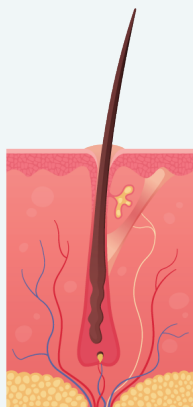
The three stages of hair growth:

Stage	Description
1. Anagen	The actively growing hair. The bulb is thick and fleshy.
2. Catagen	The portion of the hair structure extending above the skin's surface.
3. Telogen	The hair is resting, awaiting new growth. The bulb is non-existent. The Anagen, Catagen, Telogen sequence of events repeats itself until a hair ceases to be formed due to an internal or external influence.



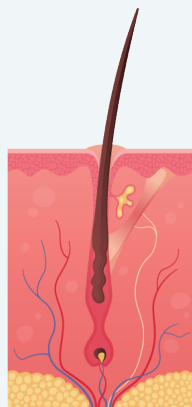
Anagen Phase

The actively growing hair. The bulb is thick and fleshy.



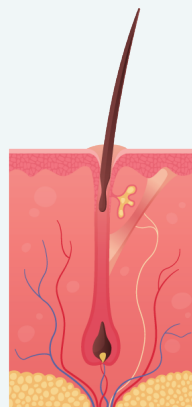
Catagen Phase

The temporarily inactive hair. The bulb is like a club shape or a full stop.



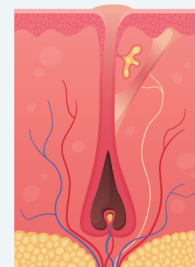
Telogen Phase

The hair is resting and awaiting new growth. The bulb is non-existent.



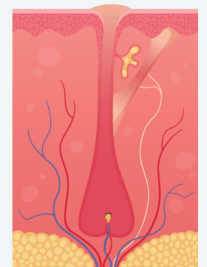
Exogen Phase

At this point the hair sheds from the follicle.



Early Anagen Phase

The hair growing cycle starts again.



Harley Wax Phase

Harley Wax completely removes the hair bulb from the follicle.

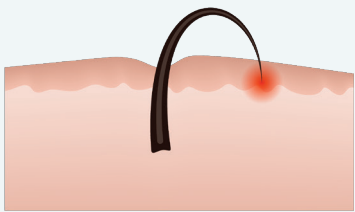
Factors That Influence Hair Growth

The amount of hair we have on our bodies depends upon many factors, including the seasons, climate, hormones and hormonal changes, medication, gender and overall state of health.

Stage	Description
Blood Circulation	Nourishes and detoxifies the papilla. The papilla is very sensitive to changes in blood circulation.
Emotional Disturbances	Emotional shock, over exertion or severe stress.
Genetic Factors	Inherited conditions. (E.g., baldness, hormonal imbalances).
Drugs	Hair loss: chemotherapy, antibiotics and tranquillisers.
Diet	Sudden or total change, iron deficiency, obesity.
Endocrine System	Puberty, pregnancy, hysterectomy, dysfunction or disease.

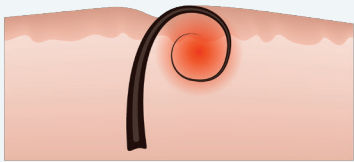
Different Types of Hair Growth:

Type	Description
Superfluous Hair	General term for any unwanted hair condition.
Lanugo Hair	Hair that is formed on the unborn foetus. It is fine hair that lacks a medulla. It is shed shortly after birth and is replaced with permanent hair.
Vellus Hair	Fine hair that covers most areas of the body, except for the palms of the hands and soles of the feet. They do not contain a medulla.
Terminal Hairs	Coarse, visible hairs on the scalp, underarms and pubic areas.
Ingrown Hairs	Hairs that, on emerging from the follicle, either grow along the skin's surface or turn back into the follicle opening and become compacted.



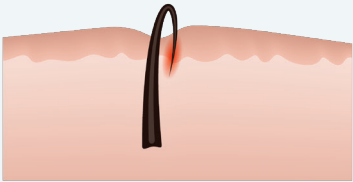
Friction ingrown hair

When friction causes the hair to grow back into the follicle.



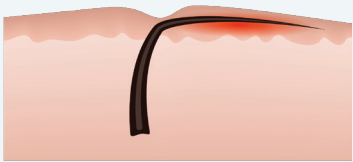
Tornado ingrown hair

When hair cannot exit the follicle, turns back and continues to grow in a spiral motion.



Trapped ingrown hair

When hair has been trapped in the follicle and no longer continues to grow.



Common ingrown hair

When hair cannot exit the follicle and continues to grow under the skin.

Contra-indications to Waxing

If your client has any of the following you must take extra care and safety precautions, as well as use good judgement, as there are various levels of severity in each condition. We recommend that a test patch should be performed on the client 72hrs before the wax treatment.

Stage	Description
Varicose veins	Do not wax over moderate or well pronounced varicose veins.
Bruises	Do not wax over bruises.
Skin diseases	I.e., herpes - do not wax near herpes or cold sores.
Defective circulation	I.e., ulcers on the legs - do not wax over these.
Cuts, abrasions, scabs	Do not wax over any of these, unless they are well healed.
Warts	Do not wax over warts.
Hairy moles	Do not wax hair from hair moles, cut the hair off at skin level before waxing the surrounding area.
Hypersensitive	Hypersensitive skin from sunburn or windburn - do not wax until the skin is well healed.
Recent scars	Only wax after scars have healed.
Irritated or inflamed skin	Do not wax over these conditions.
Rashes or infection	Do not wax over these conditions.
Medication	Take extra precautions if your customer is on medication such as Roacutane or Retin A.
Electrolysis	Avoid waxing before or after electrolysis or ultraviolet treatment to the area.
Others	Take precautions if your client suffers from diabetes mellitus, boils, rashes, or any skin infections.

Hygiene & Cleanliness

As a waxing specialist, it is your duty to provide a hygienic, clean working environment to protect yourself and your clients against potential cross infection. We suggest you use this checklist to ensure you are providing safe waxing procedures:

- Does your client have any open wounds, rashes or skin infections?
- Have the bed, trolley and all implements been sterilised?
- Is your wax heater clean? Is your wax the correct working temperature?
- Have you washed your hands with antiseptic; do you have gloves on?
- Do you have disposable spatulas or sufficient metal spatulas?
- Do you have good lighting?
- Have you prepared the skin by wiping with Harley Cleanser & Toner?
- When using Harley Hot or Film Wax, have you applied a small amount of Harley Pre-Waxing Oil?
- After an application, have you applied Harley After Wax Oil or Aloe Soothing Gel?

Client Consultation Cards

It is essential to make use of client consultation cards to ensure all steps are taken to provide your client with the appropriate treatment, taking into account any health issues he or she might be experiencing.

In the unlikely event of a client making an insurance claim against you, the consultation card will show that all steps required of you were taken and that the client's health information is on record.

Consultation forms are part of a criterion for standard legal operating procedures in the beauty industry and are drilled into a beauty professional's routine from day one. A consultation card is used to find out if there are any contraindications which may prevent the therapist from carrying out a treatment. All salon professionals carrying out treatments must keep their clients' consultation cards and ensure that they are stored in a cabinet which can be locked in order to comply with the data protection act.

When carrying out a client consultation you should be looking for contraindications to the treatment. Contraindications are health conditions that the client may have which mean that you should be cautious or possibly avoid working on those specific areas of the body. In more extreme cases, you may need to avoid treatment altogether.

It is important that you check with your insurance company to determine which contraindications they require you to check for the list can differ between insurers. Therefore, if you do not check their specifications, you may find that you are not covered should a client make a claim against you.

If the client is a regular, you should ask them to review the consultation form they have filled in and inform you of any changes. Once you have determined that it is safe to proceed with the treatment, you can take the client to the treatment area and begin waxing.

After the treatment, you should complete a consultation assessment, make notes of any significant observations made during the appointment and give the client after care advice. We have included the latest consultation card form on the Harley Wax website for ease of reference.

Client Consultation Card



Contact Name _____ Date _____

Street Address _____ D.O.B. _____

Email Address _____ Mobile _____

1. Have you ever had a wax?

2. Are you taking Retin A, Accutane, Glycolic Acid, A.H.A Skin Care or any other similar products that affects the skin?

3. Have you recently had any type of chemical or glycolic peel?

4. If glycolic, what percentage? If chemical, please explain?

5. Do you have any allergies?

6. Do you have diabetes?

7. Have you had surgery in the past 3 months or dermabrasion?

8. Are you taking any antibiotics or medication? If so, please list all (including over the counter drugs/herbal supplements):

9. Are you using any skin thinning products and/or drugs?

10. How would you rate your sensitivity to pain?

11. Do you have any moles, warts, abrasions, skin irritations or skin inflammations in the areas to be waxed?

12. Have you been exposed to any tanning method in the past 24 hours?

13. Are you exposed to the sun on a daily basis or are you considering spending more time in the sun soon?

14. Please describe your current skin condition.

15. Have you had any bad waxing treatments? If so, when and with what products, the more detail the better.

Female Clients: When is your next menstrual cycle due to begin?

(Please note, waxing during your menstrual cycle can lead to increased sensitivity.)

In an effort to make your waxing experience as comfortable as possible, please supply your wax technician with any necessary details in regard to past waxing procedures or health information not requested on this form.

Pre-waxing tips

Exfoliate 48 hours before a waxing treatment to optimise waxing results.

Avoid using creams, lotions or oils before a treatment.

Test patch 48 hours before a full treatment.

Post waxing tips

After a waxing treatment it is advisable to stay out of the sun for at least 48 hours.

If this cannot be avoided then a good sun block needs to be applied.

Wear loose fitting clothes after a wax treatment to reduce skin irritation.

Avoid hot showers until any redness subsides.

Exfoliate 72 hours after a waxing treatment to reduce the chances of ingrown hairs.

Avoid applying any perfumed products for up to 48hrs after a waxing treatment.

All your information is kept private and will only be shared between you and your therapist.

Cautionary Conditions

The following is a list of contraindications to waxing services which will make this waxing appointment inadvisable or may result in certain body areas not being waxed. Your esthetician will review these with you prior to your treatment. Please check all conditions that apply. Make any corresponding notes on the diagram below.

1. Broken Skin, Open Cuts, Pustules or Papules?

2. Inflammation?

3. Bruises?

4. Sunburn?

5. Rosacea/Very Sensitive Skin?

6. Recent Botox/Collagen Injections?

7. Cosmetic/Reconstructive Surgery?

8. Suspicious Growths/Moles?

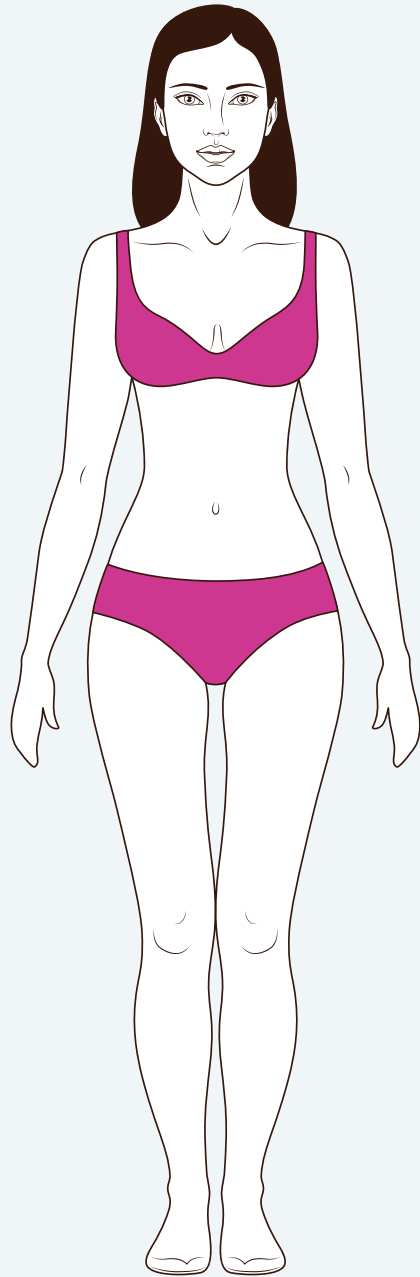
9. Phlebitis/Swelling – Lower Legs?

10. Fragile Capillaries/Varicose Veins?

11. Flat Moles?

12. Please describe your current skin condition?

13. Do you have any tattoos and/or body modifications?



I hereby release this establishment from

The hair removal procedure and after care have been thoroughly explained to me and I have had the opportunity to ask questions and receive satisfactory answers. I understand that because of certain health conditions, epilation services may not be advised.

I also understand that there may be swelling or irritation in waxed areas and that this may only be a temporary condition. I am of lawful age and have read and fully understand and have completed the content of this document to the best of my knowledge and represent myself as physically capable of using the service offered by this facility.

Date

Client Signature

Technician Signature

Pricing & Treatment Usage

Please refer to the following table to determine our estimated treatment costs. For optimum waxing results and client comfort, we recommend Harley's Pre and Post Waxing products.

Wax	Both Legs 1/2 Leg	Underarm (2)	Full Face	Bikini	Chin	Eyebrow (2)	Lips
Amount Needed	600g	31g	35g	35g	7g	4g	4g
Hot Wax 1kg							
Amount Needed	18g	5g	10g	10g	5g	2g	2g
Strip Wax 500ml							
Amount Needed	300g	16g	18g	18g	5g	2g	2g
Film Wax 1kg							

Please note:

This information is to be used as a guide only and has been calculated in accordance with the minimum product usage. The cost may vary slightly with individual therapists. If you would like an up to date price breakdown please contact the sales team or your local distributor.

Application Methods and Tips

Following these tips on using Harley Waxes will help to deliver optimal results to your clients.

- Place wax into a wax heater at a low heat setting, occasionally stir the wax while slowly turning up the wax heater until you have a soft, honey like consistency.
- Test the wax on the inside of your wrist to ensure it is at a comfortable temperature.
- Prepare the skin before waxing treatments using Harley Cleanser & Toner.
- The following application directions should be followed for individual Harley Waxes.

Hot Wax

Apply a thin layer of Harley Pre-Waxing Oil with a cotton pad. Starting in the opposite direction of hair growth, apply the wax in a figure of 8 to lift the hair into the wax. Once it has cooled and become slightly firm (not hard or brittle), flick up the tab. Gripping the tab with one hand and firmly holding the skin with the other, remove the wax in the opposite direction of the hair growth in one quick motion.

Film Wax

The Harley Film Wax range also requires an application of the Harley Pre-Waxing Oil. Load the spatula, rotating it to avoid it dripping. Apply in the direction of the hair growth. Slightly lift the spatula at the end and wave over the patch until the wax wisps snap off. If the wax is too stringy, slightly turn up your heater but not too much or you will not be able to load the spatula. Once the wax has cooled and become slightly firm and not sticky, flick up a tab. Gripping the tab with one hand and firmly holding the skin with the other, remove the wax in the opposite direction of the hair growth in one quick motion.

Strip Wax

Use only the Harley Cleanser & Toner before with Harley Strip Wax; do not use Pre-Waxing Oil as it will prevent the wax from adhering to the skin. Using a spatula or wax roller, apply the wax evenly in the direction of the hair growth. Massage a waxing strip into the wax, then while gripping the strip with one hand and firmly holding the skin with the other, remove the strip in the opposite direction of the hair growth in one quick motion. Use After Care Oil to remove any sticky wax residue from the skin.

- When removing all Harley Waxes, immediately apply firm pressure with your hand afterwards to soothe the skin and reduce redness. After the waxing treatment, tweeze away any stubborn hairs and apply Harley After Wax Oil or Aloe Soothing Gel to reduce redness and irritation.
- Always use Harley Pre and Post Waxing products to optimise the client treatment experience and achieve silky smooth results.

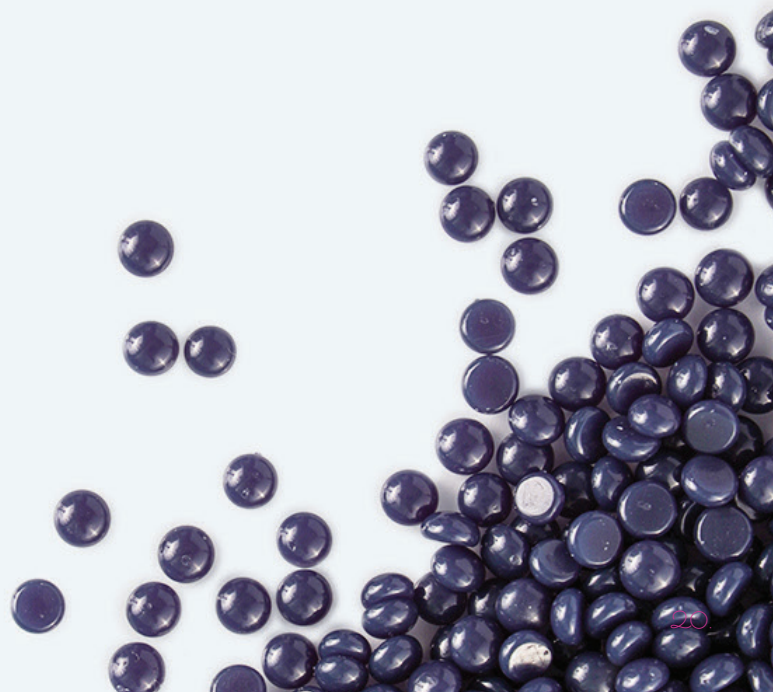
Pre Waxing Tips

- Exfoliate 48 hours before a wax treatment to optimise waxing results.
- Avoid using creams, lotions or oils before a treatment.
- Use Harley Cleanser & Toner and Pre-Waxing Oil for a comfortable, silky smooth finish.

Post Waxing Tips

- After a waxing treatment it is advisable to stay out of the sun for at least 48 hours. If this cannot be avoided then a good sun block needs to be applied.
- Wear loose-fitting clothes after a waxing treatment to reduce skin irritation.
- Avoid hot showers, bathing or swimming until any redness subsides.
- Exfoliate 72 hours after a waxing treatment to reduce the chances of ingrown hairs. Do not exfoliate before this time as the skin will be extra sensitive.
- Avoid applying any perfumed products for up to 48 hours after a waxing treatment.
- Do not use a solarium or sunbathe until redness subsides.
- Do not apply self-tanning products until redness subsides.
- Use Harley After Wax Oil or Aloe Soothing Gel to soothe the skin, calm irritation and reduce redness and bump.


Remember to use our Harley Pre and Post Products for optimal results. Developed exclusively with the Harley waxing range, they are the key to achieving the best results for your clients.





Contact Us

 01984 623 209

 orders@harleywaxing.co.uk

 www.harleywaxing.co.uk

